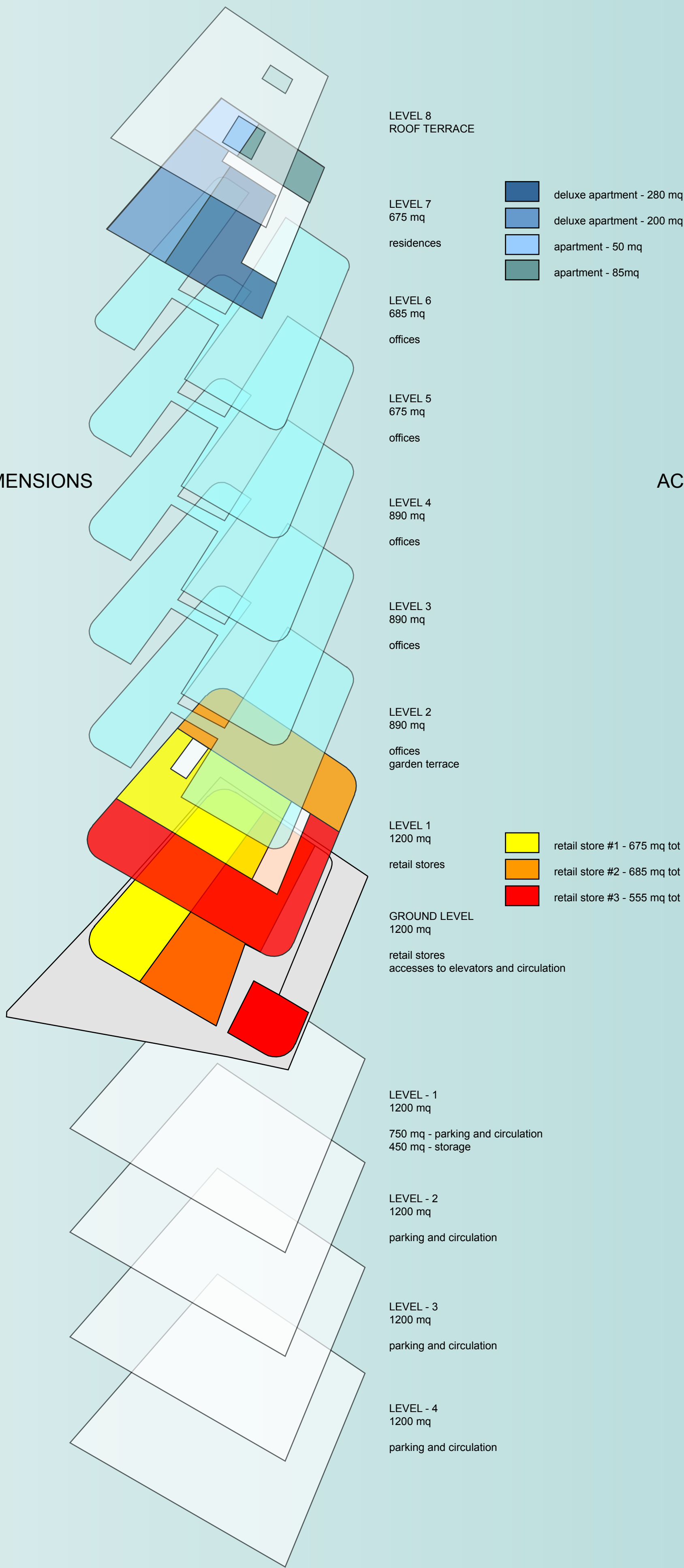
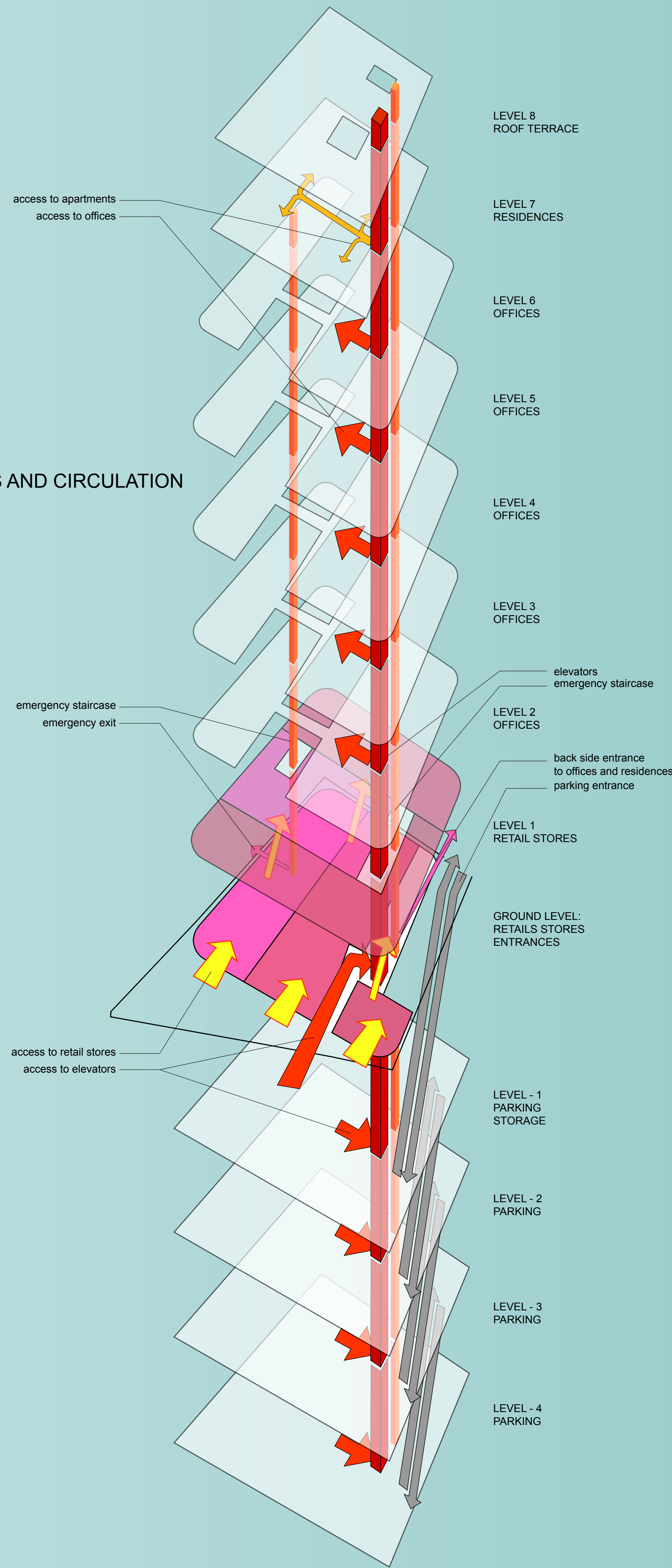


FUNCTIONS AND DIMENSIONS



ACCESSES AND CIRCULATION



The space that architecture occupies in the city is not just a physical space, the body of a construction, but is the space of imagery, of emotions and memories, of dreams. It is the space that you build inside your own self, taking as reference the objects and the feelings that his city provides you. It is a space in continuous evolution, a kind of personal mental map of the city, drawn upon a network of points of high emotional density: a private layer of perception and intensity overlapped to the city of everyday life, the ceaseless repetition of the same, usual habits.

Architecture can speak directly to the emotional sphere of your inner self, connecting the materiality of the building to a world of hidden meaning and feelings, immediate sensations or faraway memories which may come back to the surface of your life.

Sympathy: from the ancient greek *σύν* (with) and *πάθος* (affection). In common language, sympathy is that specific affinity responsible of the attraction for a person (or a thing) in particular, and very often the word is used like a synonymous of affection or love. In philosophic language the term has two meanings: an objective one, which comes from metaphysics - the cosmos is an all comprehensive entity, in which all parts are unified by an armory that constitutes the base of the "reason of the universe" (Eracito) or the mutual solidarity that links men and unanimated entities (neo-Platonism) - and a subjective one, the identification in someone's state of mind, or the feeling with others, the foundation of an authentic knowledge of social relations.

The architecture of sympathy is that kind of architecture that generates positive emotions, the extra-value of rationality and functionality. It produces a feeling of intimate closeness, pushes processes of familiarity, identification, possession; it makes you feel like you are happy to see it every day. Like a good friend, it triggers good feeling. It raises the level of happiness in your mental map of the city (or in the world, if you are a global citizen). It makes you feel glad that you live in that place. It is that kind of architecture that may even makes you feel like changing your daily scheduled routines, make a detour, pass by there and say 'hello, how are you today?'

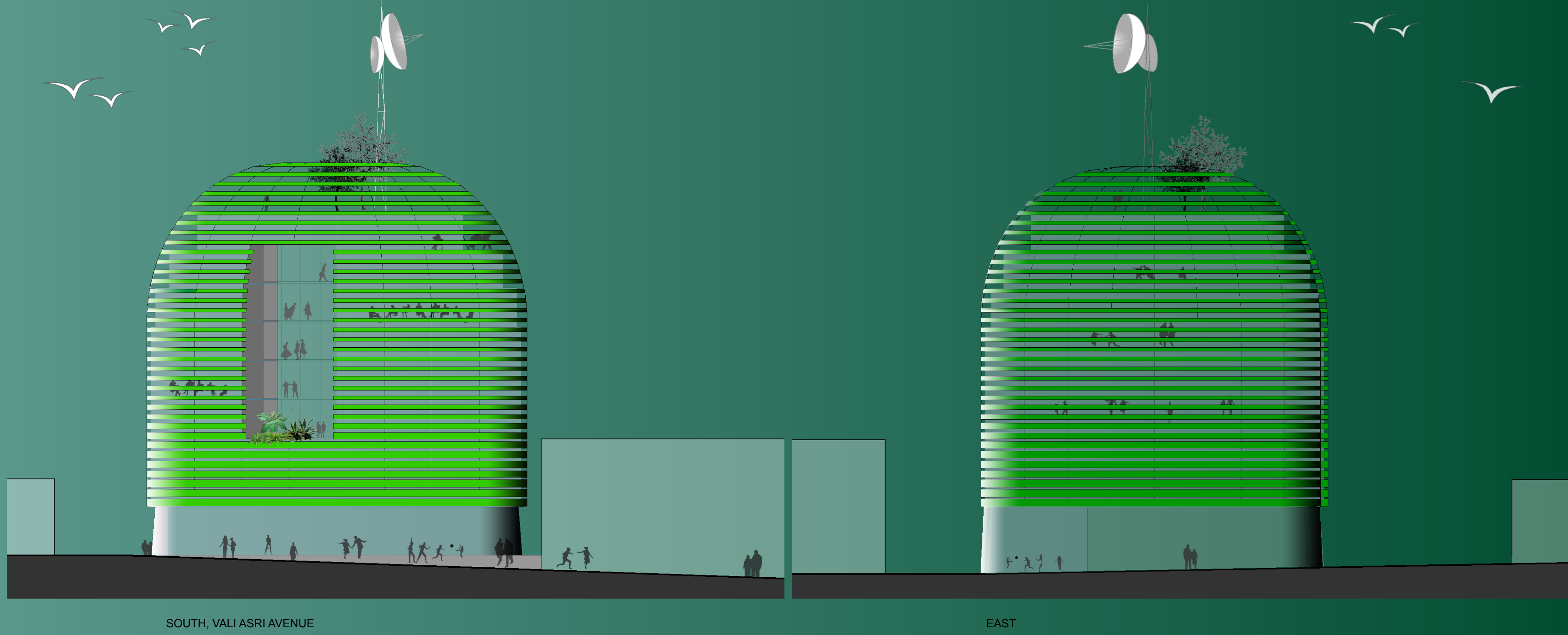
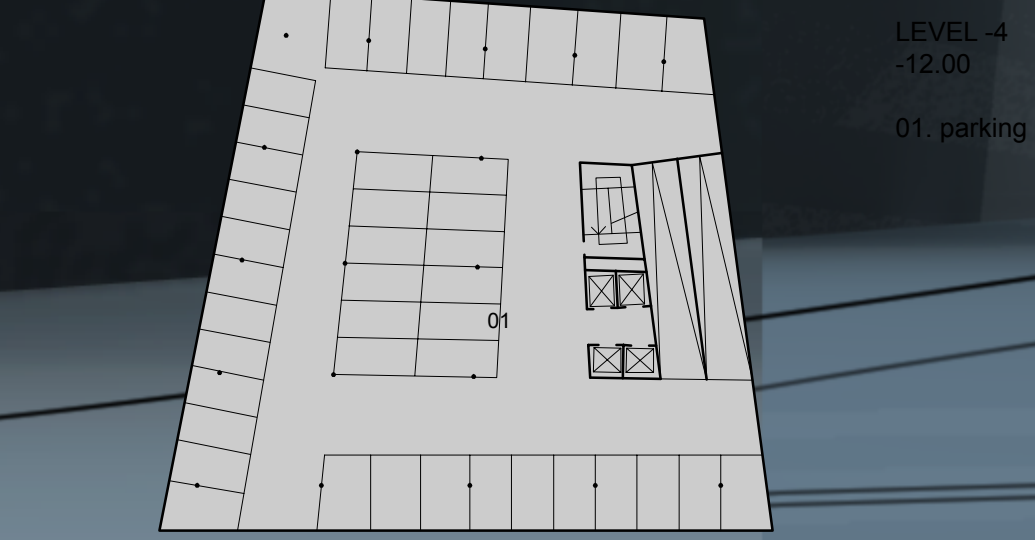
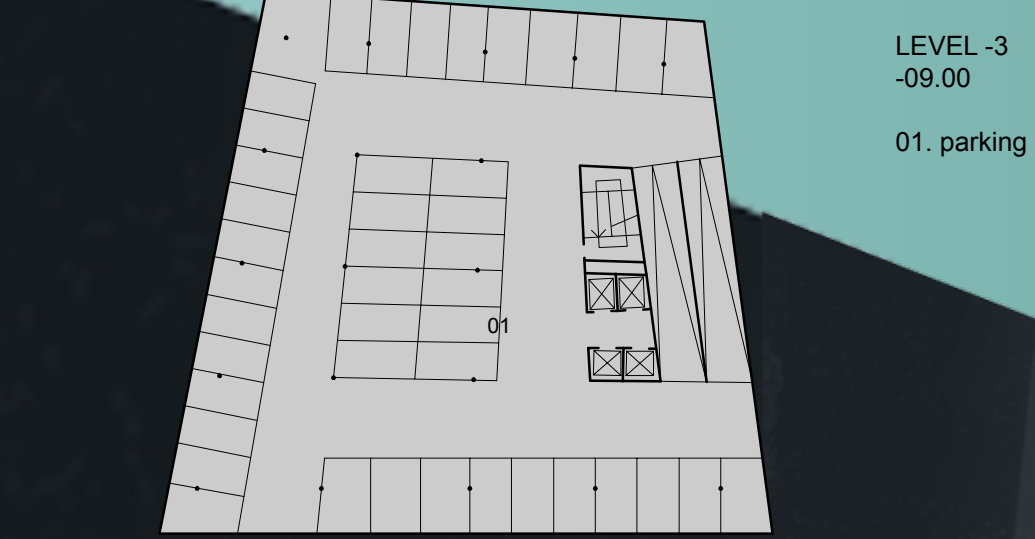
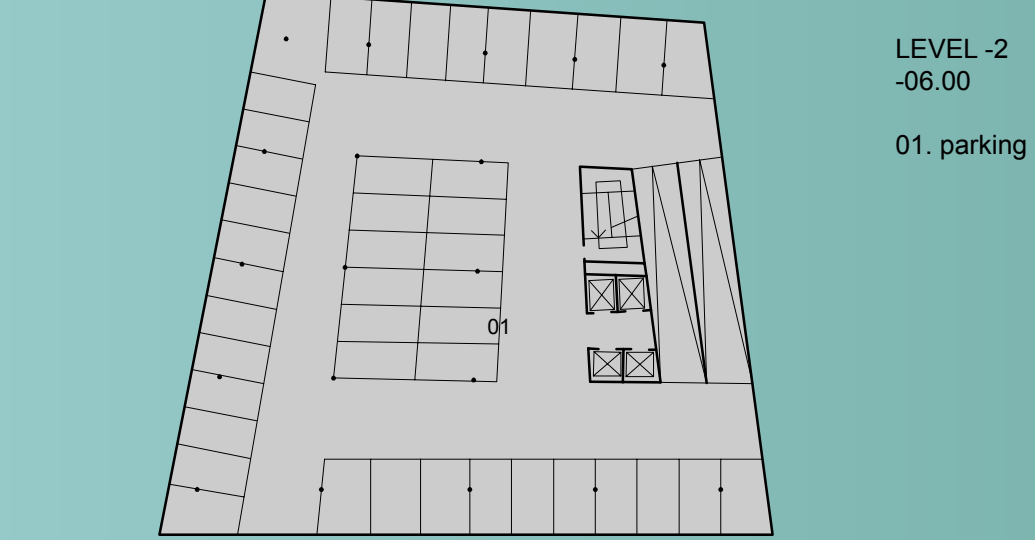
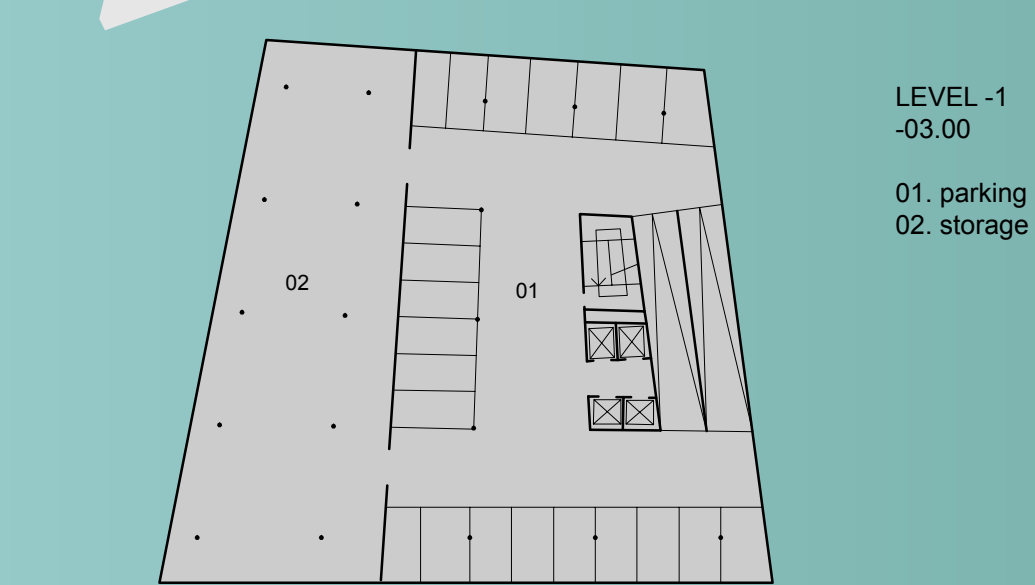
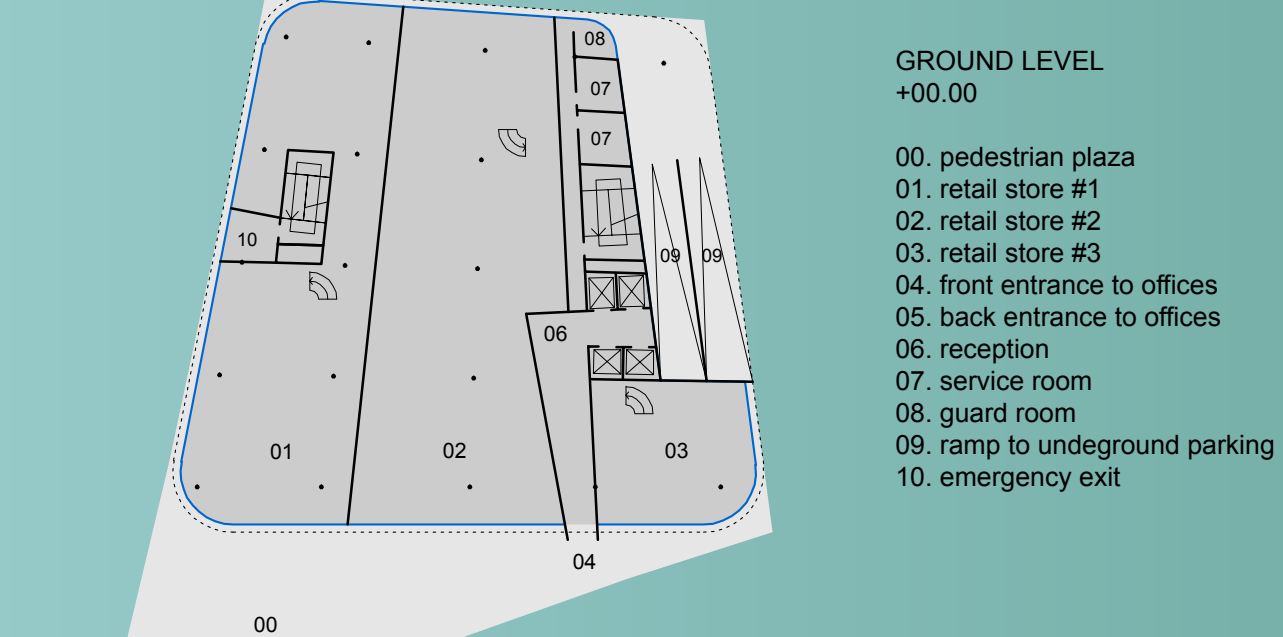
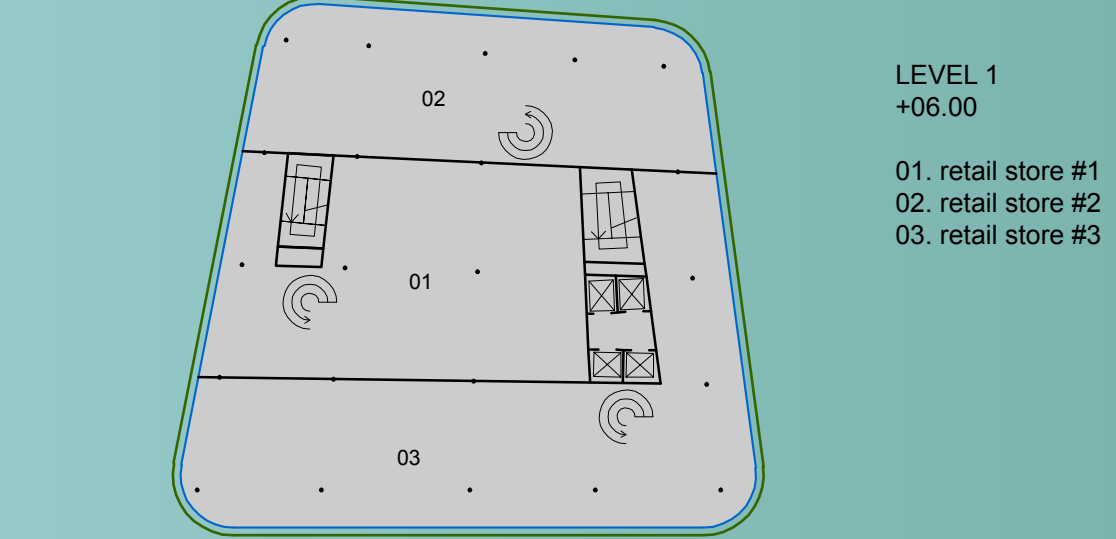
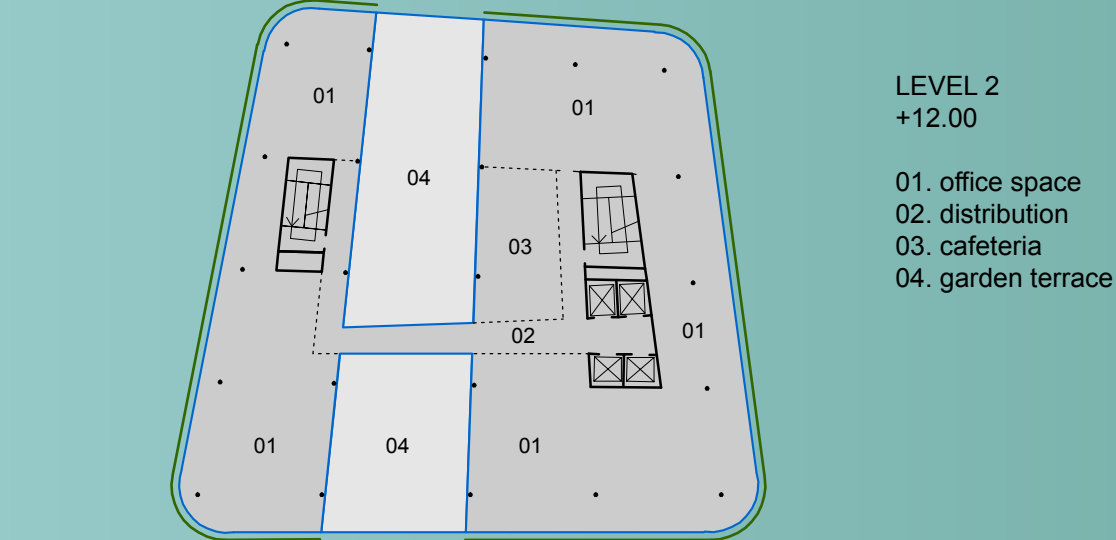
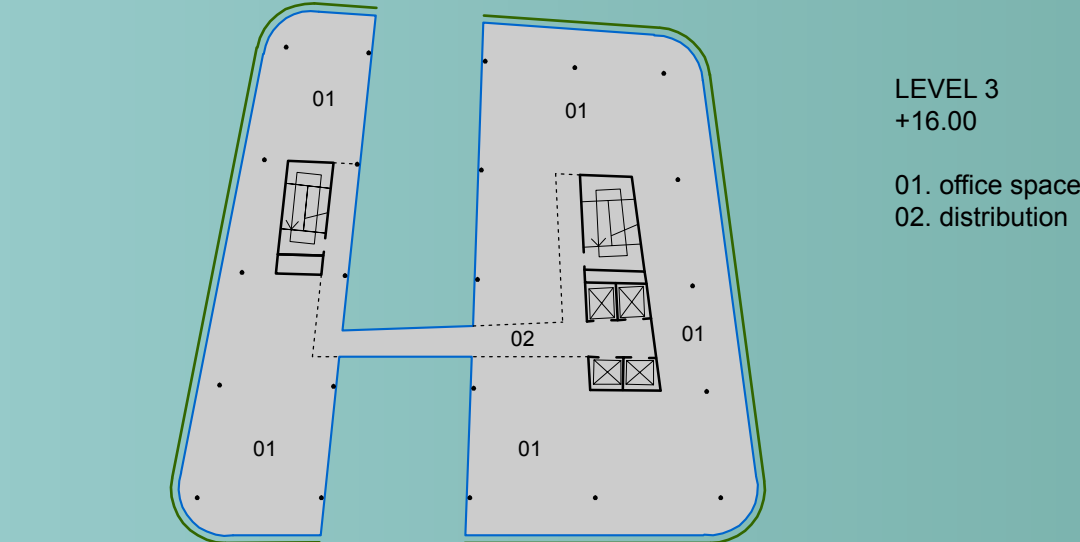
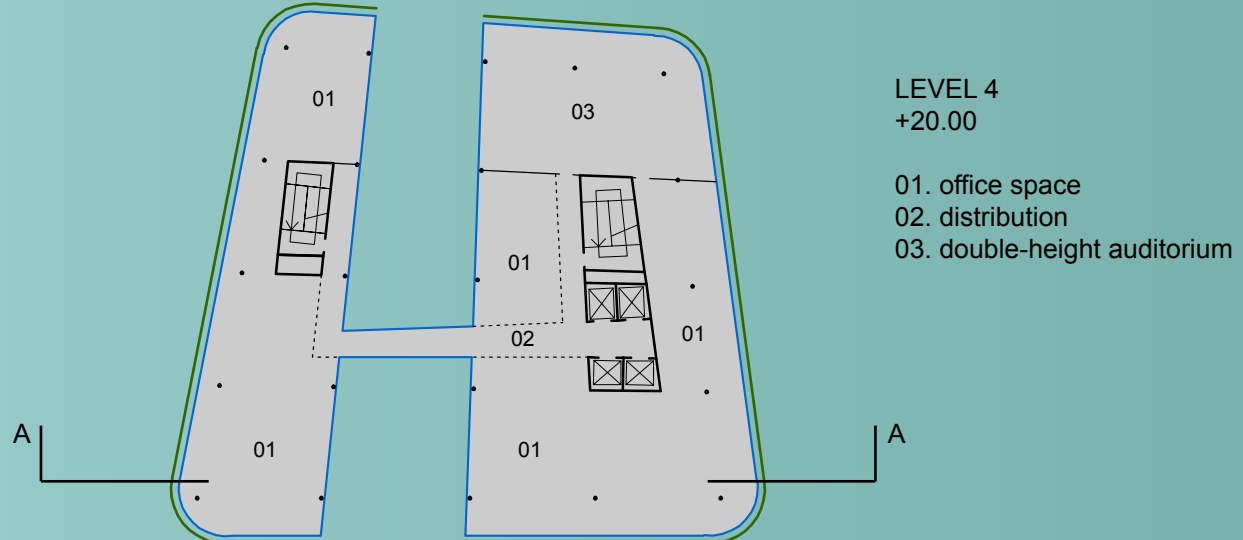
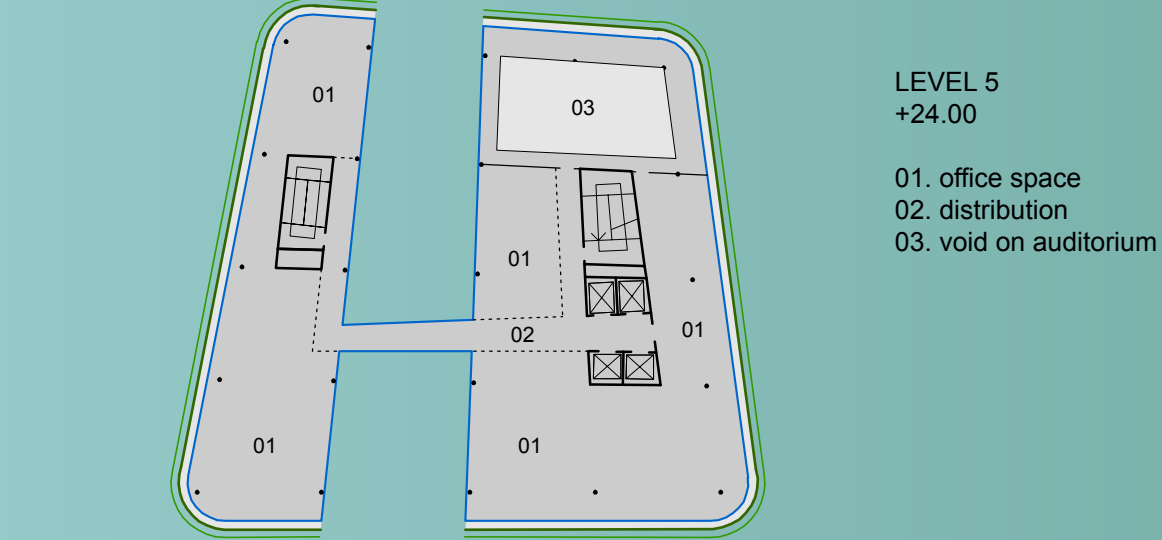
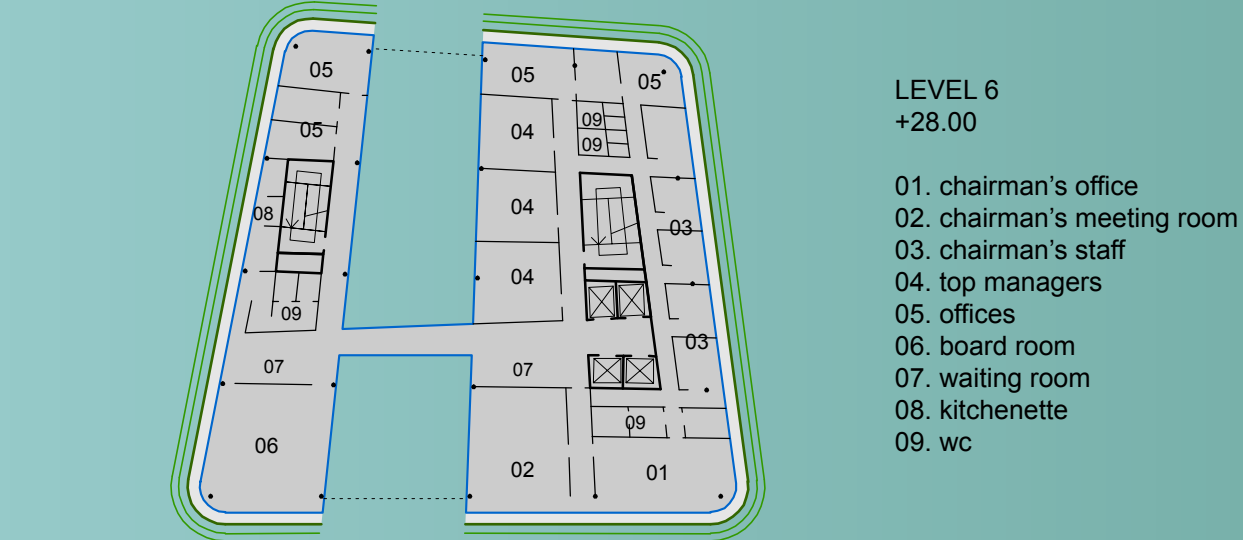
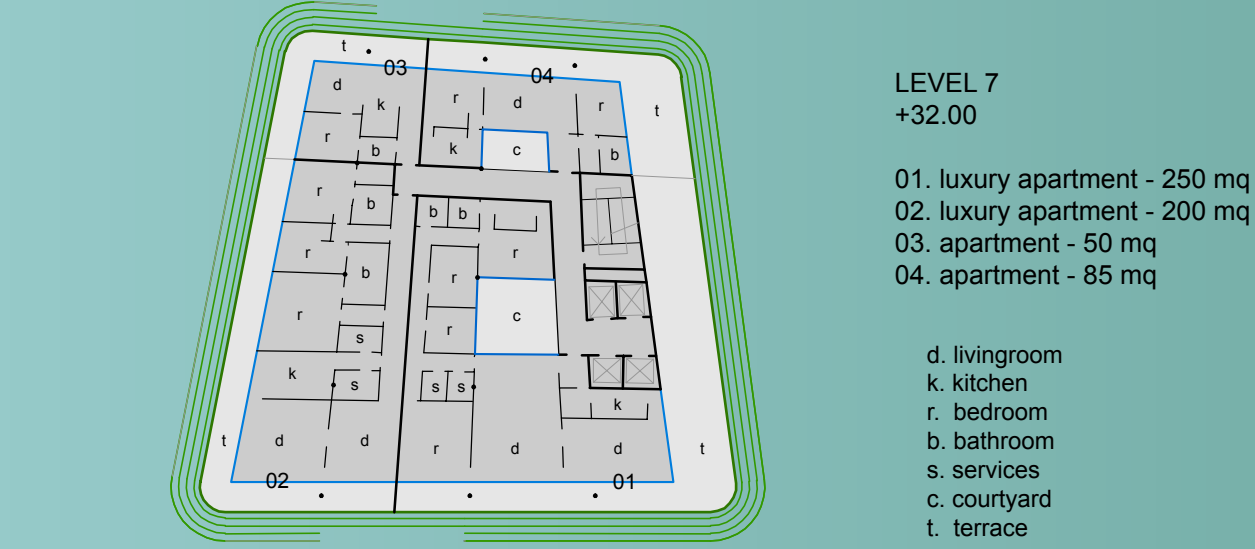
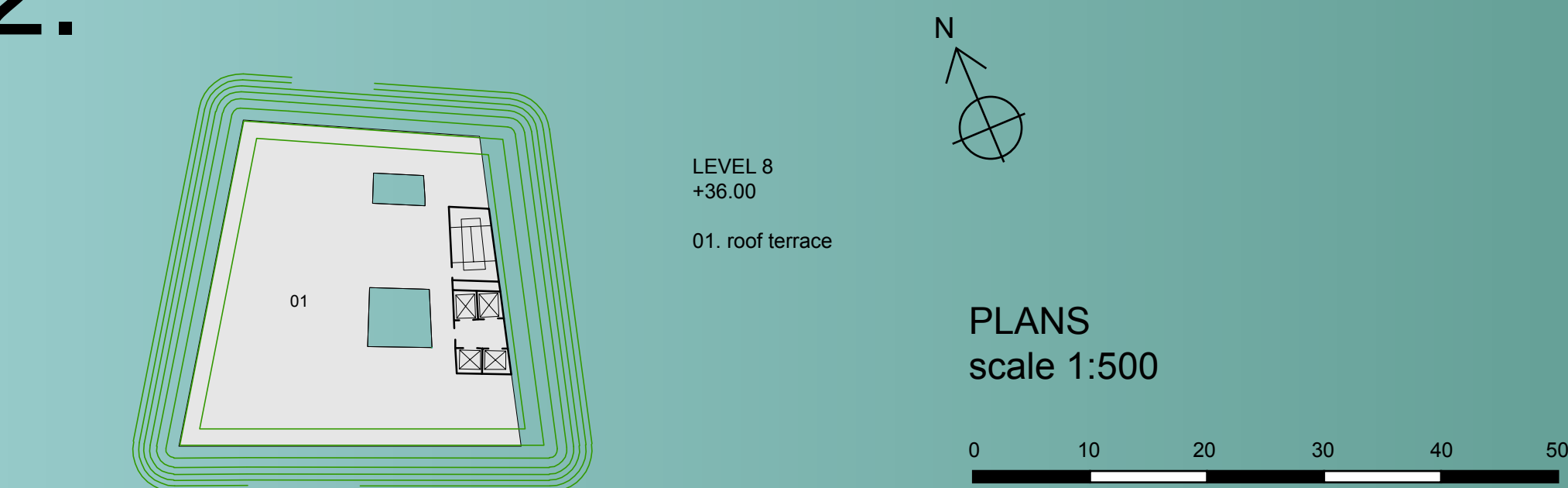
The forms of the architecture of sympathy may be very explicit, or very implicit. Some people say buildings should be decorated sheds, some other say buildings are machines for living. The architecture of sympathy does not say anything, but it just lets you guess. It gives you space for your own imagination.

The architecture of sympathy is not auto-referenced. Most likely, it makes you think that it represents something else. Is it the bold head of a ghost? A laughing alien? A mushroom? A nuclear plant? A cup of coffee upside-down? Your grandpa's belly? A woolen hat? You may not know exactly what it is, but at least it makes you smile.

This project aims to intersecate the principles of the architecture of sympathy with the precise functional program given by the brief. It is based on simple building technologies of common use. Its envelope is a light structure of horizontal elements (made of wood, metal or terracotta, finished with photovoltaic paint) which acts as sun-shading device and energy generation, plus it provides the external smoothed shape of the construction. A big hole cuts through the building - is it a wide open eye? is it a canyon? is it the mouth of the shark? - in order to save some space for an inner court, an open-air garden terrace. Most important, the step back of the building mass from the road line allows the creation of a pedestrian public plaza on the ground floor, just in front of the entrances to the stores and the offices. The project pursues sustainability and sympathy in architecture.



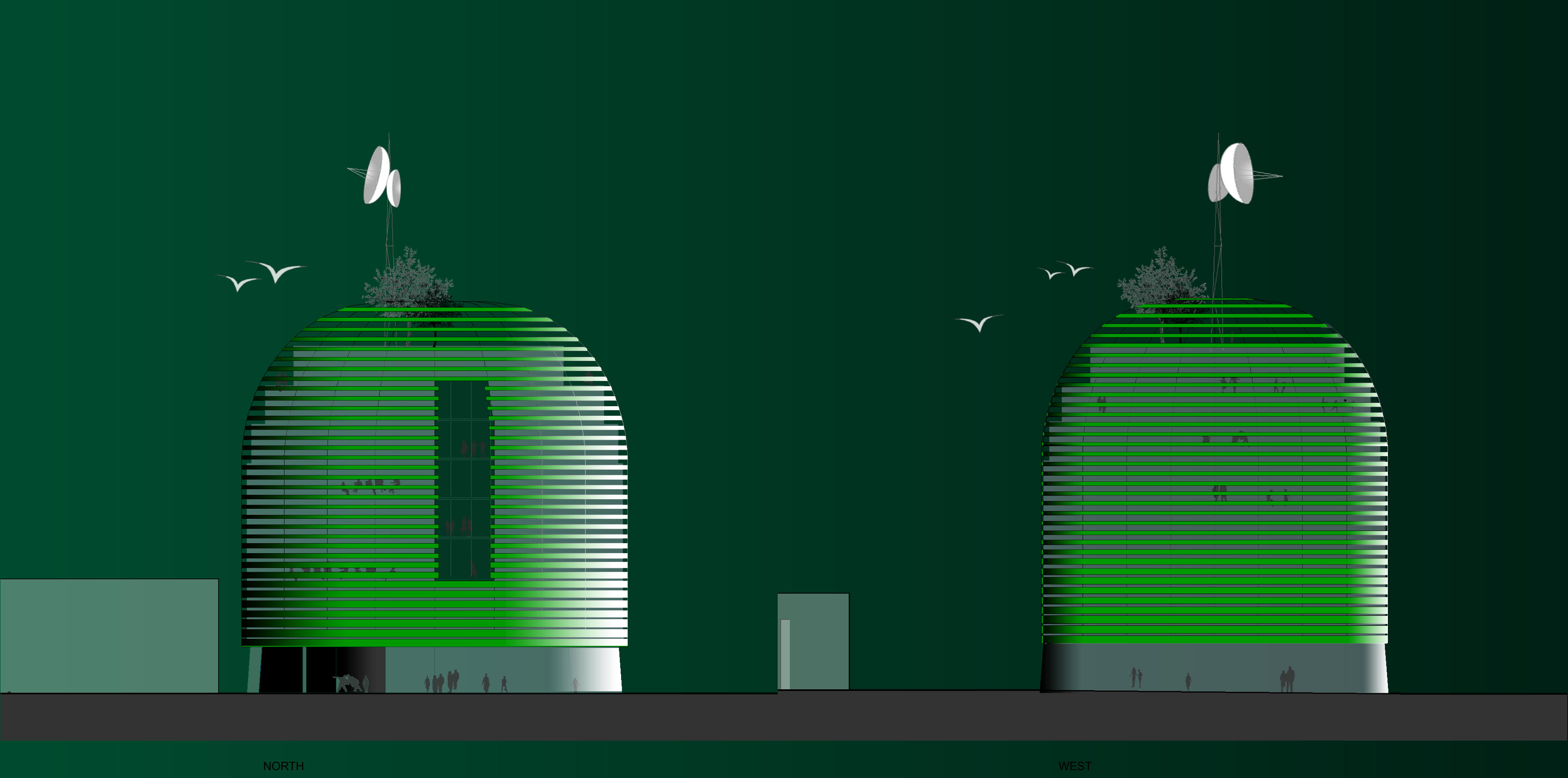
2.



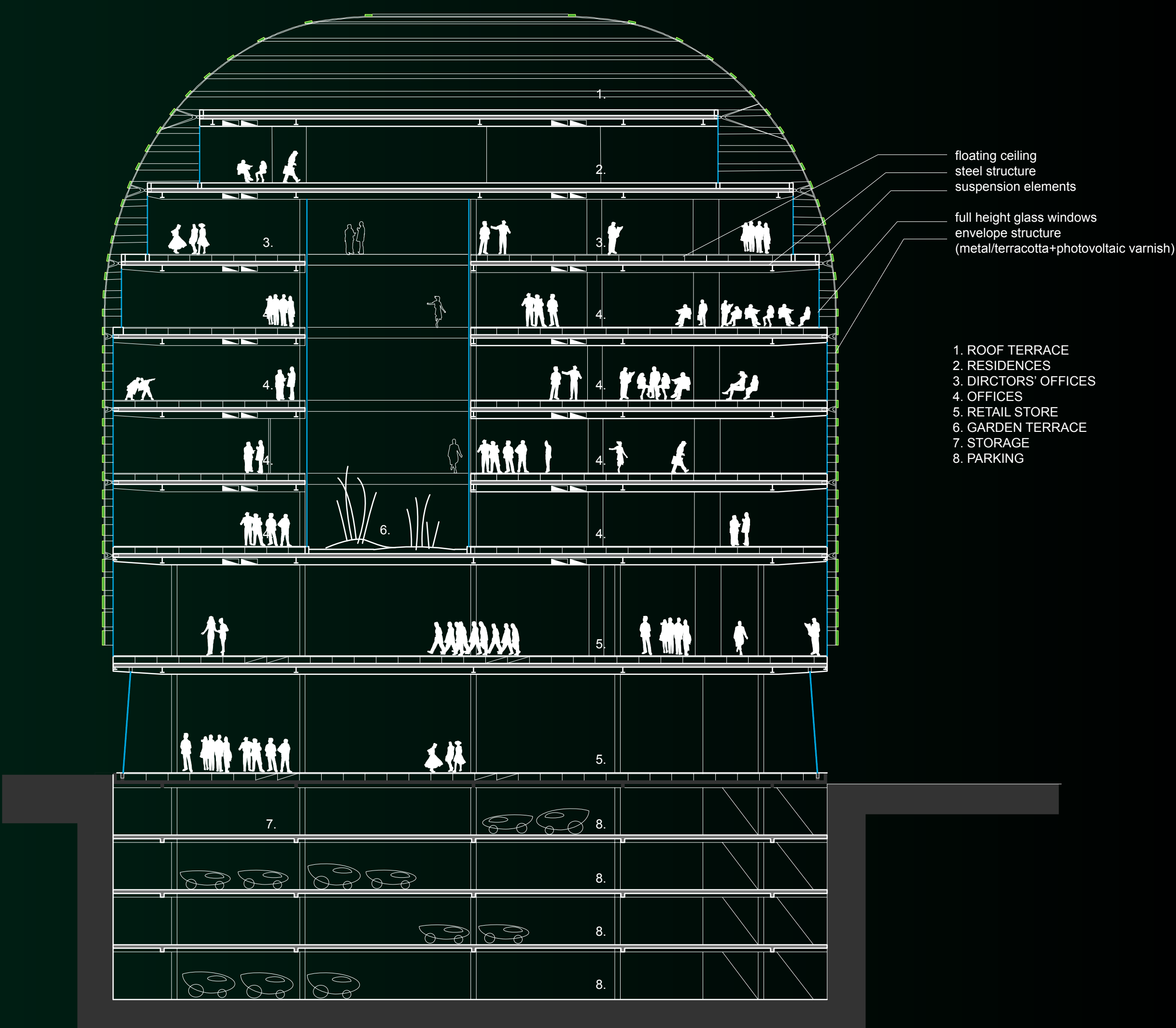
ELEVATIONS  
scale 1:333







ELEVATIONS  
scale 1:333



SECTION A-A  
scale 1:200

0 4 8 12 16 20

